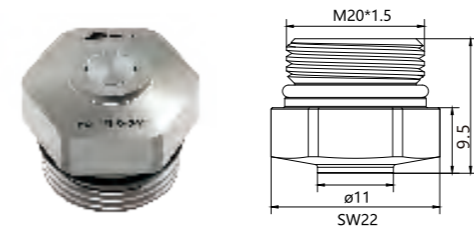


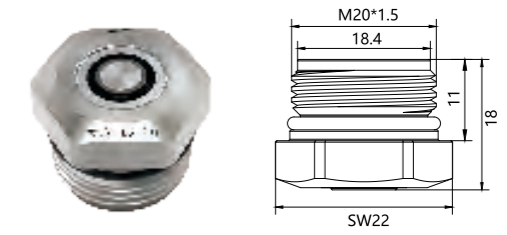
## Enclosure

By continuously innovating and upgrading product features, we aim to provide customers with a more comprehensive product experience

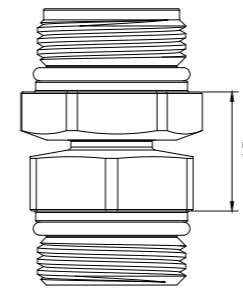
### Flange type leakage connector



WXL-FLS-20T



WXLS-FLS-20T



#### Product features:

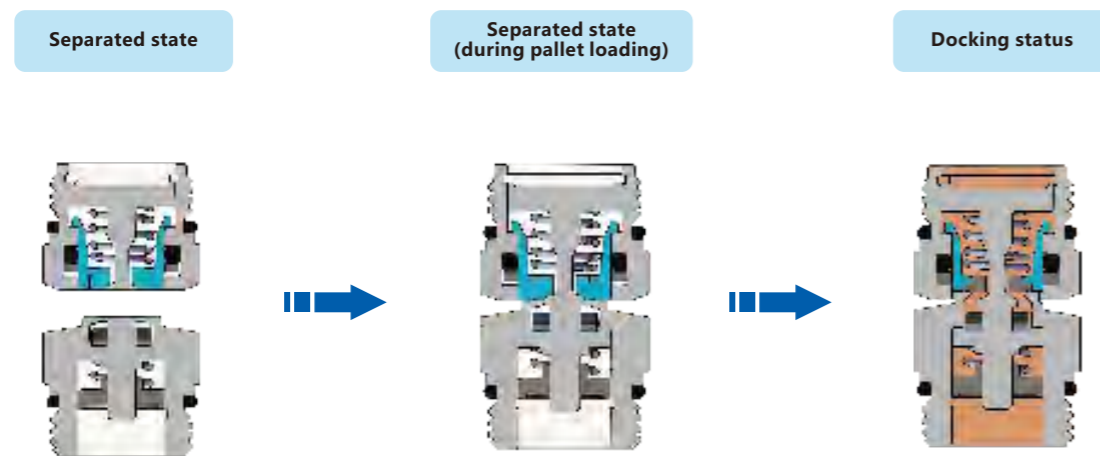
- Application: Pneumatic, Hydraulic;
- Maximum pressure resistance: 25MPa;
- Suitable for pressure source docking of manual ball lock zero point system;
- Suitable for quick change docking or cutting off pressure sources in zero point positioning systems.

#### Main parameter table:

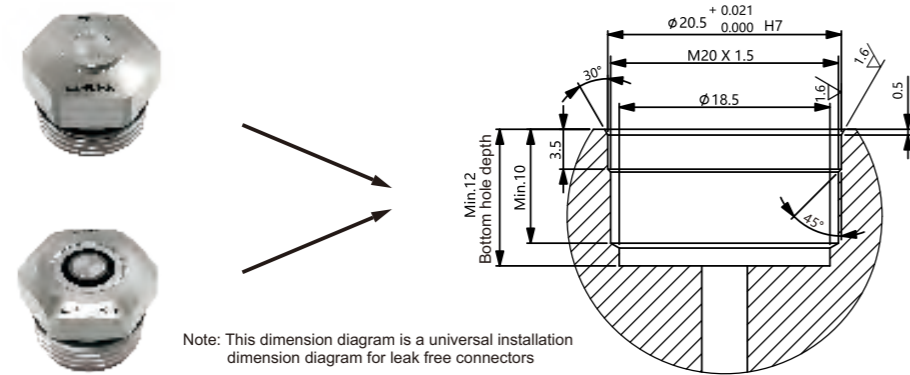
Size number	A	B	C
WXL-FLS-20T	9.5	19.5	15



**Action description:**

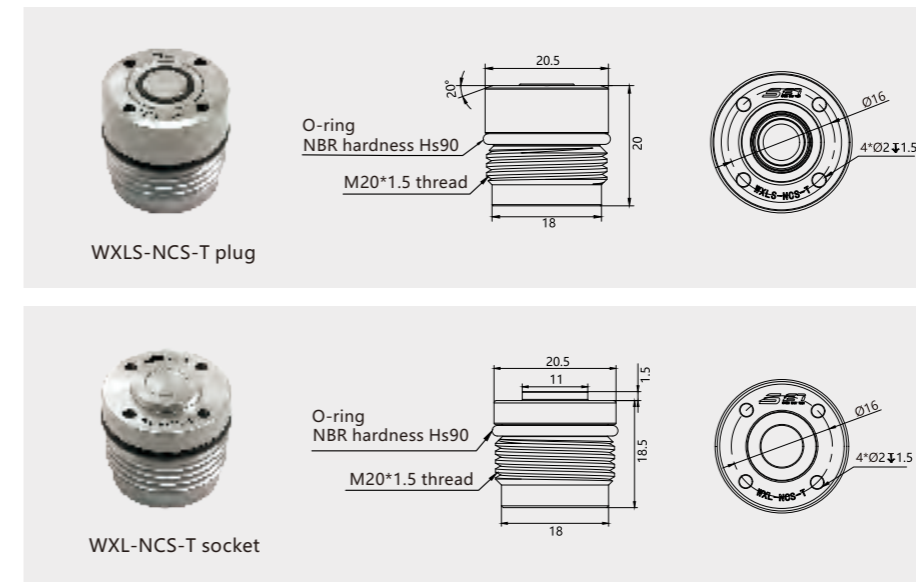


**Installation dimension diagram of leak free connector:**



**Note:**

- ※ If there is fluid flow in the joint during separation and connection, it will cause fluid leakage to the outside. Therefore, please stop supplying fluid during separation and connection.
- ※ There is no built-in filter in the connector. When making connections, in order to prevent foreign objects from entering the interior of the piping, it is necessary to perform air cleaning in advance to remove foreign objects from the connection surface.
- ※ When setting up, sufficient exhaust should be provided inside the oil pressure circuit.
- ※ The recommended tightening torque is 25N. m.
- ※ When not used in combination with the zero locator, please prepare a separate stopper and guide block with a docking deviation of  $\pm 0.5$ mm, otherwise it may be damaged.

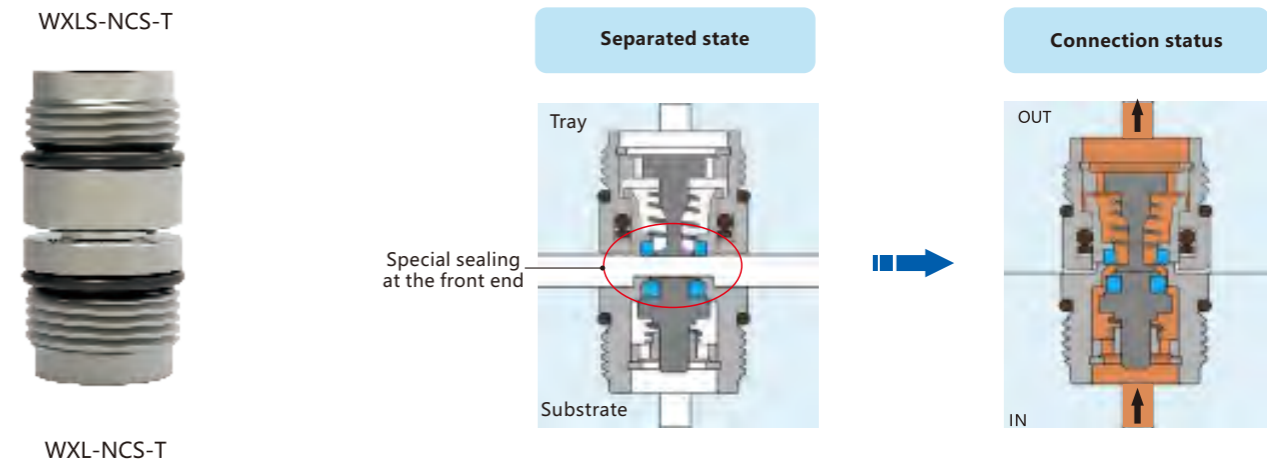


**Concealed leak free connector**

**Product features:**

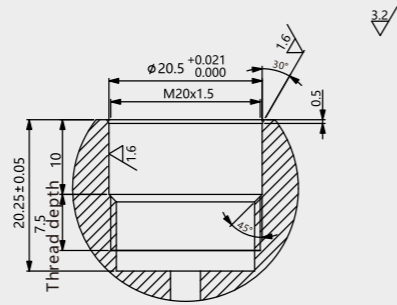
- Application: Pneumatic, Hydraulic;
- Maximum operating pressure: 7MPa;
- Suitable for quick change docking or cutting off pressure sources in zero point positioning systems.

**Action description:**

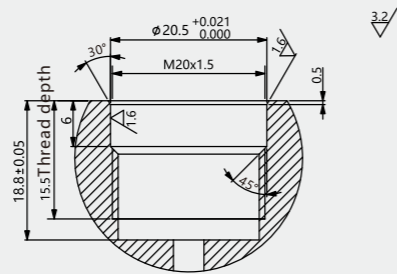


### Dimensional diagram for concealed leak free installation

WXLS-NCS-T (plug) installation dimension diagram



WXL-NCS-T (socket) installation dimension diagram

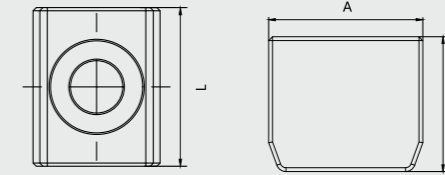
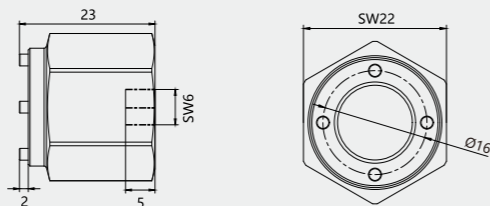


**Note:**

- ★ If separation or connection is carried out while there is fluid flow in the joint, it will cause fluid leakage to the outside. Therefore, please stop supplying fluid when separating or connecting.
- ★ There is no built-in filter in the connector. When making connections, in order to prevent foreign objects from entering the interior of the piping, it is necessary to perform air cleaning in advance to remove foreign objects from the connection surface.
- ★ The setting is to fully exhaust the internal air of the oil pressure circuit.

### Leak free connector installation tool

- ◆ Application: Leak free connector installation tool.
- ◆ The clamping torque is 15N · m.
- ◆ When not used in combination with the zero locator, please prepare a separate stopper and guide block with a docking deviation of ± 0.5mm, otherwise it may be damaged.



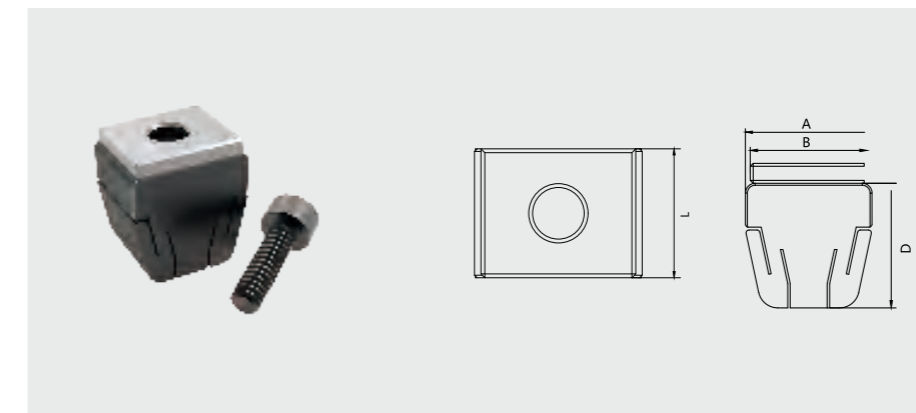
### Directional key

**Product features:**

- Material: Tool steel;
- Surface hardening treatment, polishing treatment;
- Suitable for orientation between pallets and zero point positioning systems

**Main parameter table:**

Order number	L	A	B	Paired with screws	Weight (g)
DXJ-5	7	6	7	M2.5*10 (Din912)	2
DXJ-10	10	8.14	7	M3*10 (Din912)	3
DXJ-20	10	10.14	8	M4*10 (Din912)	4



### Cone-shaped directional key

**Product features:**

- Material: Tool steel;
- Surface hardening treatment, polishing treatment;
- Suitable for orientation between pallets and zero point positioning systems

**Main parameter table:**

Order number	L	A	B	C	D	Paired with screws	Weight (g)
DXJZ-20	10	13	12	2	12.8	M4*12 (Din912)	8