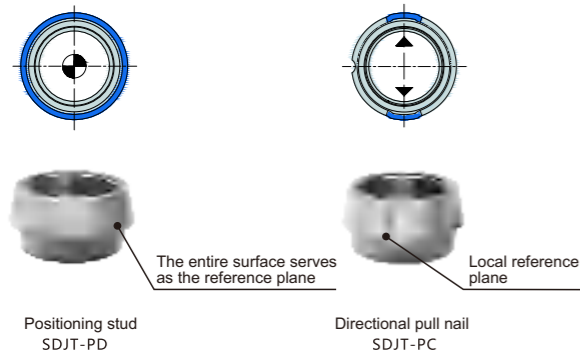
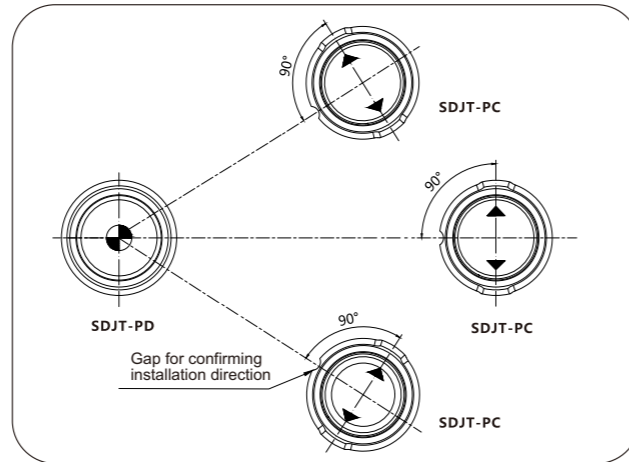


Installation distribution diagram of manual positioning device:

- ① Installing a manual positioning device requires the use of one positioning nail and one directional nail;
- ② First, fix the positioning anchor on the base plate. As long as the direction formed by the two reference surfaces of the orientation pin is 90° perpendicular to the direction formed by the centers of the positioning anchor and the orientation anchor, the installation can be completed.

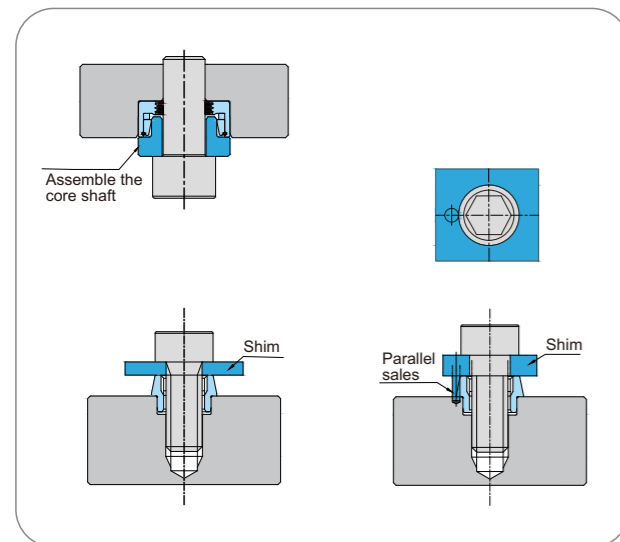


Attention: The notch for phase confirmation should be located on the central connecting line between SDJT-PD and SDJT-PC

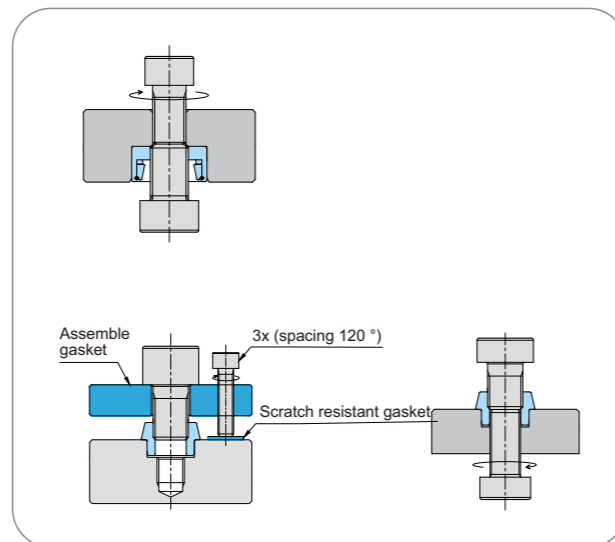


Installation and disassembly

Install



Disassemble



Attention: When installing the positioning sleeve, it is necessary to use an assembly core shaft or similar product installation and disassembly tools. These tools are not included in the product sales and need to be ordered separately.



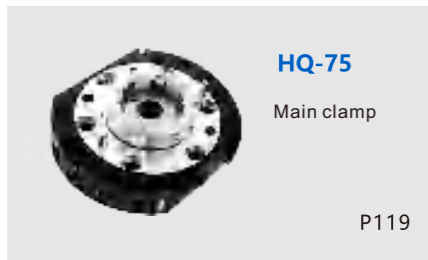
Robot quick change system

Rapid replacement system in the field of automation

25kg series



75kg series



100kg series



150kg series

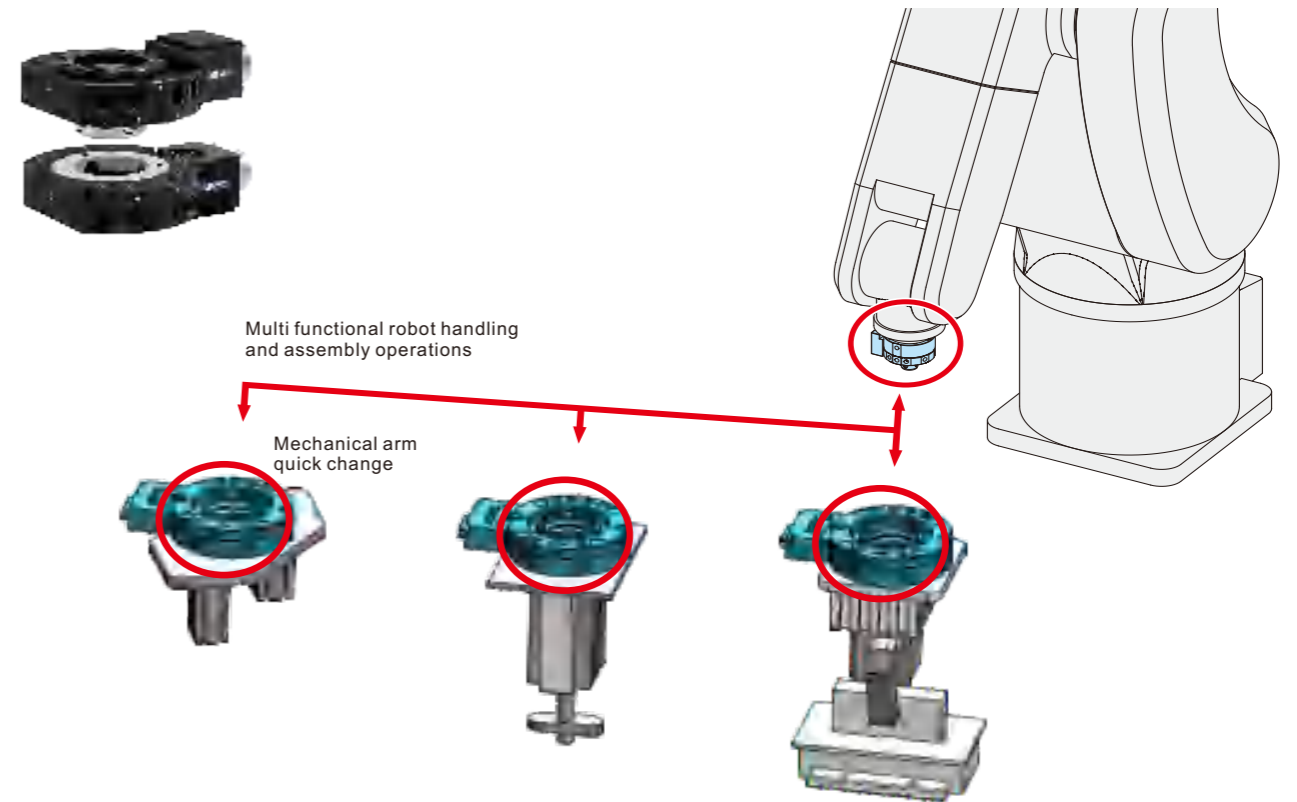


200kg series

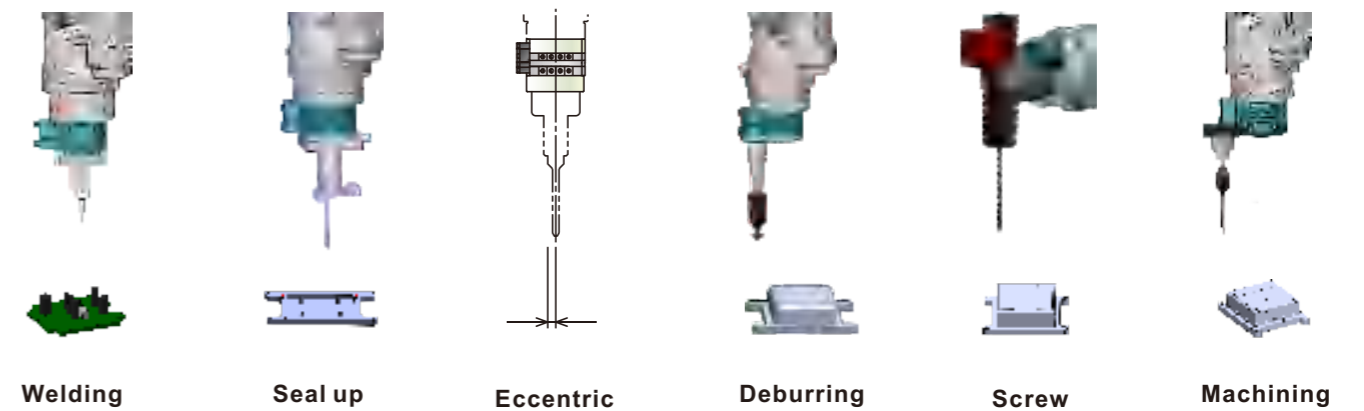


Application case:

Adopting a robotic quick change device to achieve multifunctionality of the robot. Greatly shorten the tool replacement time and improve productivity.



Application case:



The eccentricity of the front section of the tool is extremely small; Can achieve high-precision homework

Suitable for tasks that require high torque!

Mechanical arm quick change device



HQ-25

SQ-25T

Product features:

- Air pressure unlocking and clamping;
- Material: Hardened stainless steel;
- Repetitive positioning accuracy: within $\pm 0.015\text{mm}$;
- Various power, liquid, and gas modules can be optionally selected;
- Special insurance institutions prevent the risk of accidental gas outages;
- Standard configuration allows for quick connection to the gas source.

Applicable industry:

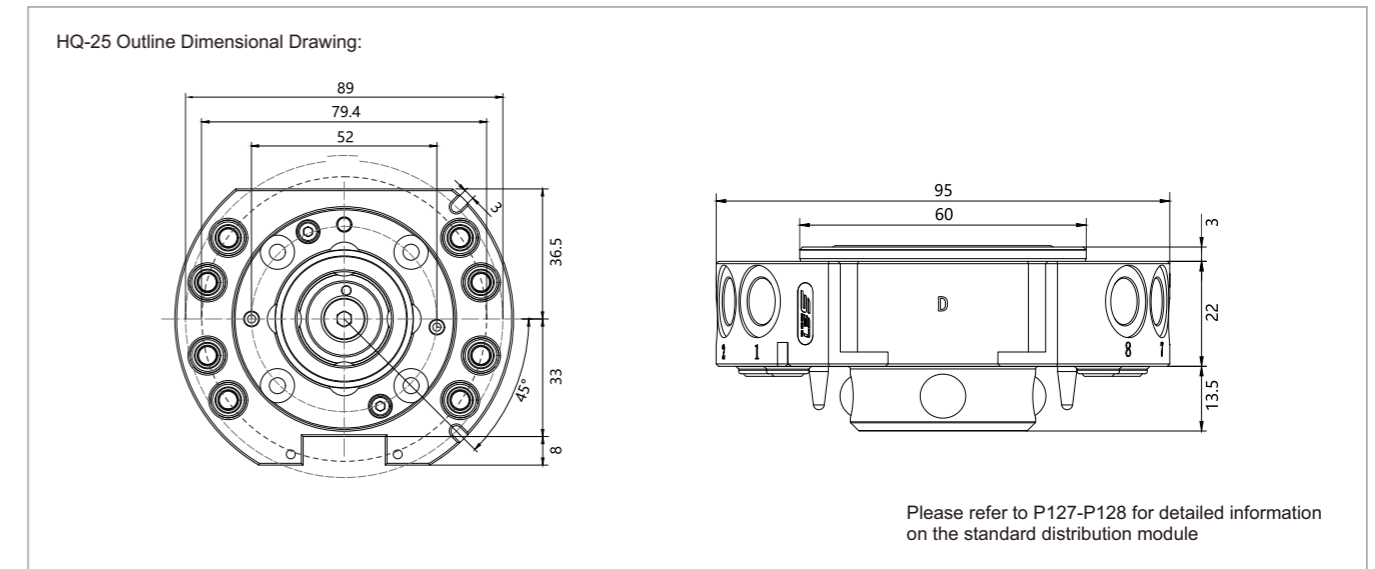
- Suitable for automated handling and assembly operations;
- Suitable for automated stamping, deburring and other processing operations,

Main parameter table:

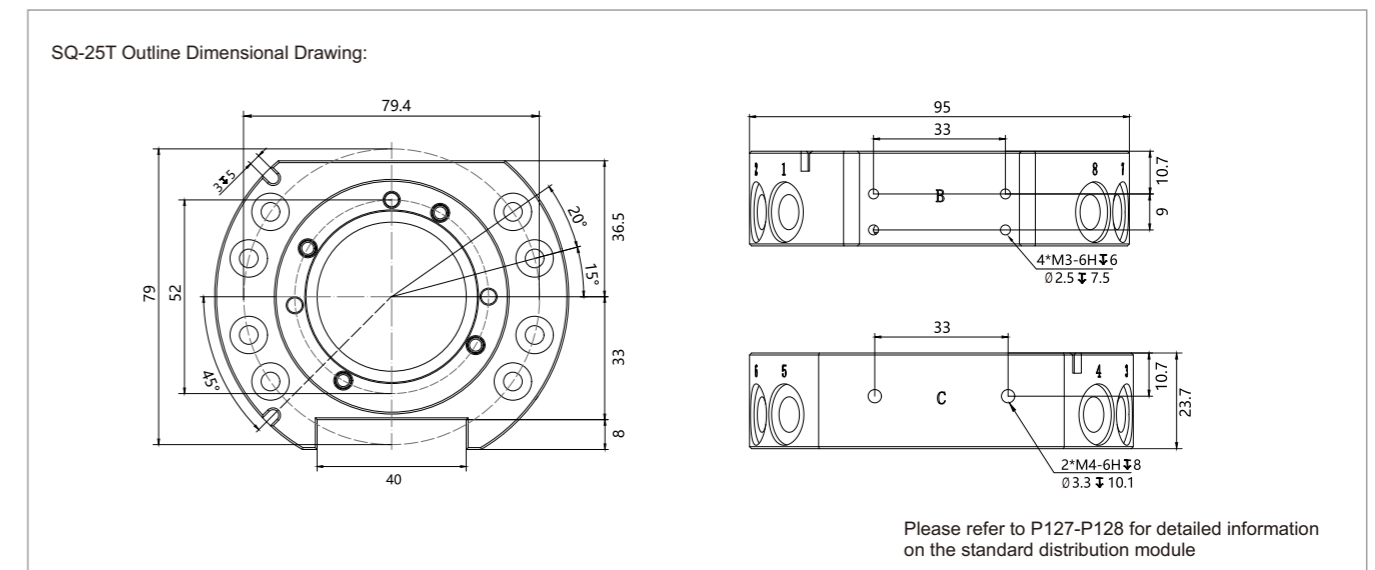
Model		HQ-25
Transportable weight	(kg)	25
Torque Mx (max)	(N·m)	169.5
Torque My (max)	(N·m)	169.5
Torque Mz (max)	(N·m)	230
Locking force	(N)	2300
Repetitive positioning accuracy	(mm)	± 0.015
Weight	(kg)	0.5
Maximum distance when locked	(mm)	3
Air channel air interface thread		8*G1/8"
Maximum allowable XY axis offset	(mm)	± 1
Maximum allowable angular offset	(°)	± 1
Minimum ambient temperature	(°C)	5
Maximum ambient temperature	(°C)	60
Minimum work pressure	(bar)	4.5
Maximum work pressure	(bar)	7

Outline dimension diagram

※ Main clamp



※ Tool adapter



Note: For more models and sizes, please contact our sales personnel.

Mechanical arm quick change device



HQ-75

SQ-75T

Product features:

- Air pressure unlocking and clamping;
- Material: Hardened stainless steel;
- Repetitive positioning accuracy: within $\pm 0.015\text{mm}$;
- Various power, liquid, and gas modules can be optionally selected;
- Special insurance institutions prevent the risk of accidental gas outages;
- Standard configuration allows for quick connection to the gas source.

Applicable industry:

- Suitable for automated handling and assembly operations;
- Suitable for automated stamping, deburring and other processing operations,

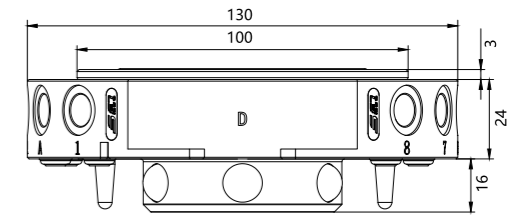
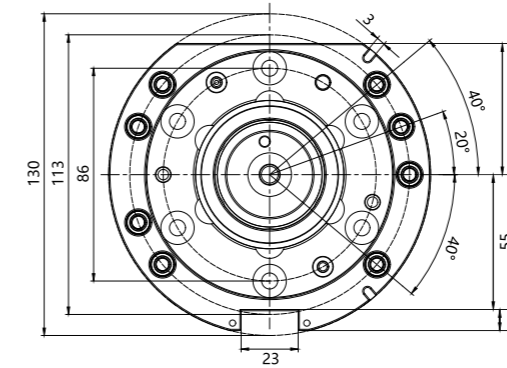
Main parameter table:

Model		HQ-75
Transportable weight	(kg)	75
Torque Mx (max)	(N•m)	591
Torque My (max)	(N•m)	591
Torque Mz (max)	(N•m)	326
Locking force	(N)	7400
Repetitive positioning accuracy	(mm)	± 0.015
Weight	(kg)	1.4
Maximum distance when locked	(mm)	3
Air channel air interface thread		8*G1/8"
Maximum allowable XY axis offset	(mm)	± 2
Maximum allowable angular offset	(°)	± 1
Minimum ambient temperature	(°C)	5
Maximum ambient temperature	(°C)	60
Minimum work pressure	(bar)	4.5
Maximum work pressure	(bar)	7

Outline dimension diagram

※ Main clamp

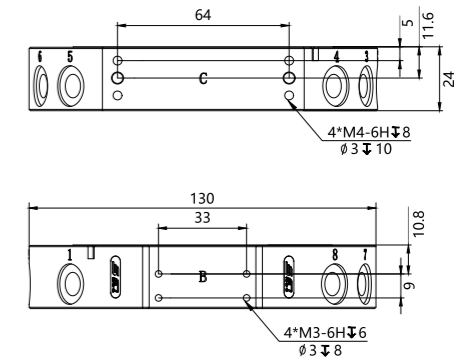
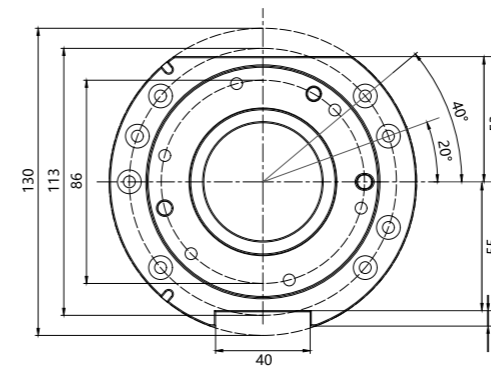
HQ-75 Outline Dimensional Drawing:



Please refer to P127-P128 for detailed information on the standard distribution module

※ Tool adapter

SQ-75T Outline Dimensional Drawing:



Please refer to P127-P128 for detailed information on the standard distribution module

Note: For more models and sizes, please contact our sales personnel.

Mechanical arm quick change device



HQ-100

SQ-100T

Product features:

- Air pressure unlocking and clamping;
- Material: Hardened stainless steel;
- Repetitive positioning accuracy: within $\pm 0.015\text{mm}$;
- Various power, liquid, and gas modules can be optionally selected;
- Special insurance institutions prevent the risk of accidental gas outages;
- Standard configuration allows for quick connection to the gas source.

Applicable industry:

- Suitable for automated handling and assembly operations;
- Suitable for automated stamping, deburring and other processing operations,

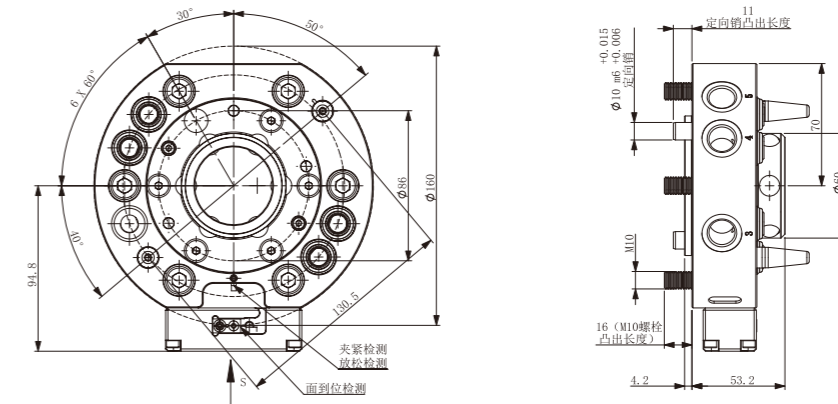
Main parameter table:

Model		HQ-100
Transportable weight	(kg)	100
Torque Mx (max)	(N·m)	1626
Torque My (max)	(N·m)	1626
Torque Mz (max)	(N·m)	2103
Locking force	(N)	12000
Repetitive positioning accuracy	(mm)	± 0.015
Weight	(kg)	2.4
Maximum distance when locked	(mm)	2
Air channel air interface thread		5*G3/8"
Maximum allowable XY axis offset	(mm)	± 1
Maximum allowable angular offset	(°)	± 1
Minimum ambient temperature	(°C)	5
Maximum ambient temperature	(°C)	60
Minimum work pressure	(bar)	4.5
Maximum work pressure	(bar)	7

Outline dimension diagram

※ Main clamp

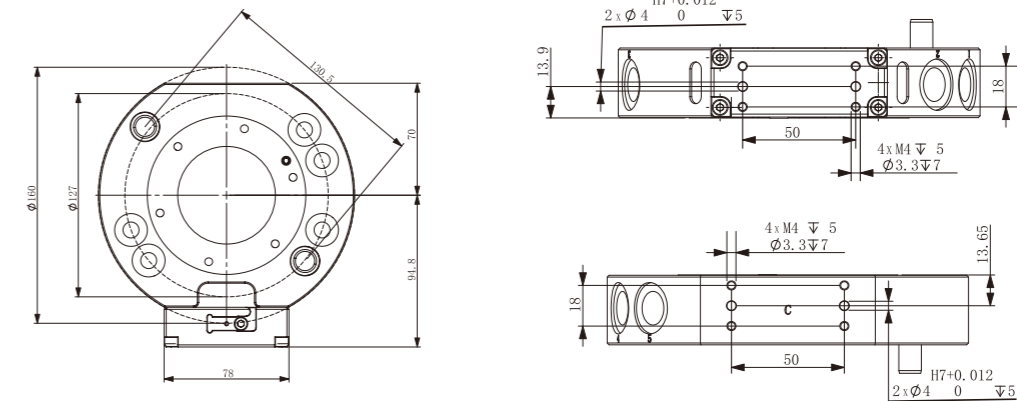
HQ-100 Outline Dimensional Drawing:



Please refer to P127-P128 for detailed information on the standard distribution module

※ Tool adapter

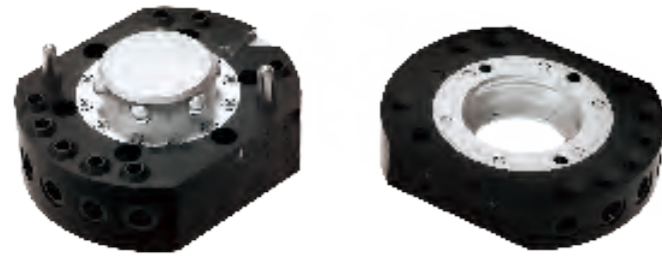
SQ-100T Outline Dimensional Drawing:



Please refer to P127-P128 for detailed information on the standard distribution module

Note: For more models and sizes, please contact our sales personnel.

Mechanical arm quick change device



HQ-150

SQ-150T

Product features:

- Air pressure unlocking and clamping;
- Material: Hardened stainless steel;
- Repetitive positioning accuracy: within $\pm 0.015\text{mm}$;
- Various power, liquid, and gas modules can be optionally selected;
- Special insurance institutions prevent the risk of accidental gas outages;
- Standard configuration allows for quick connection to the gas source.

Applicable industry:

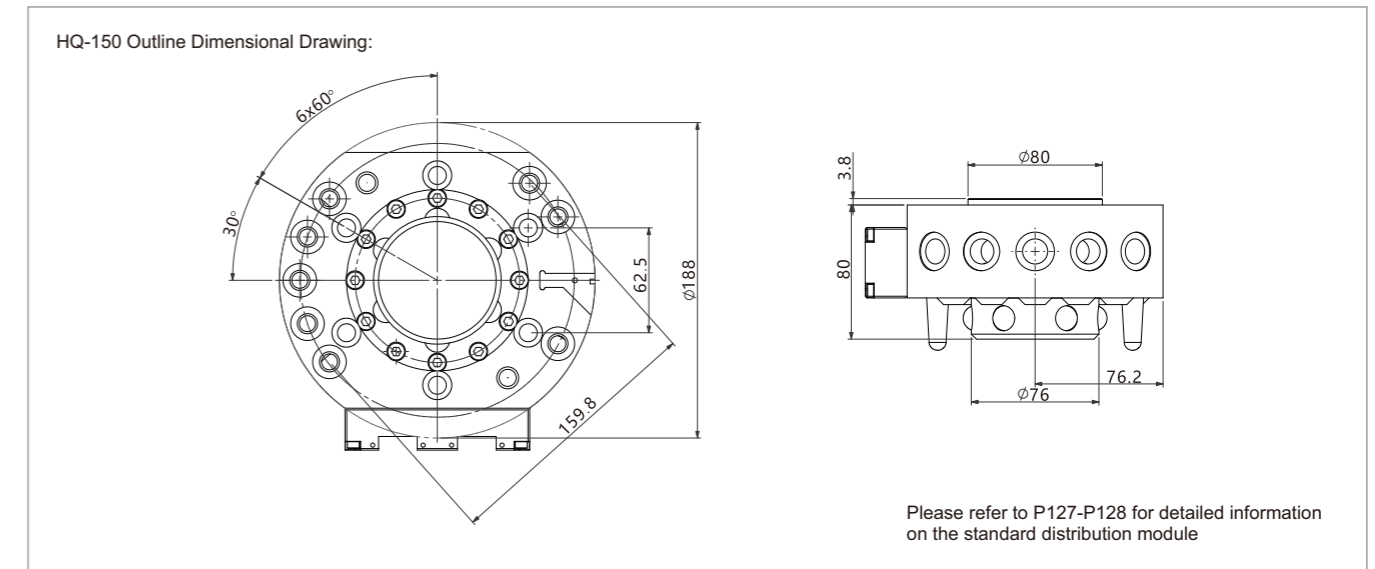
- Suitable for automated handling and assembly operations;
- Suitable for automated stamping, deburring and other processing operations,

Main parameter table:

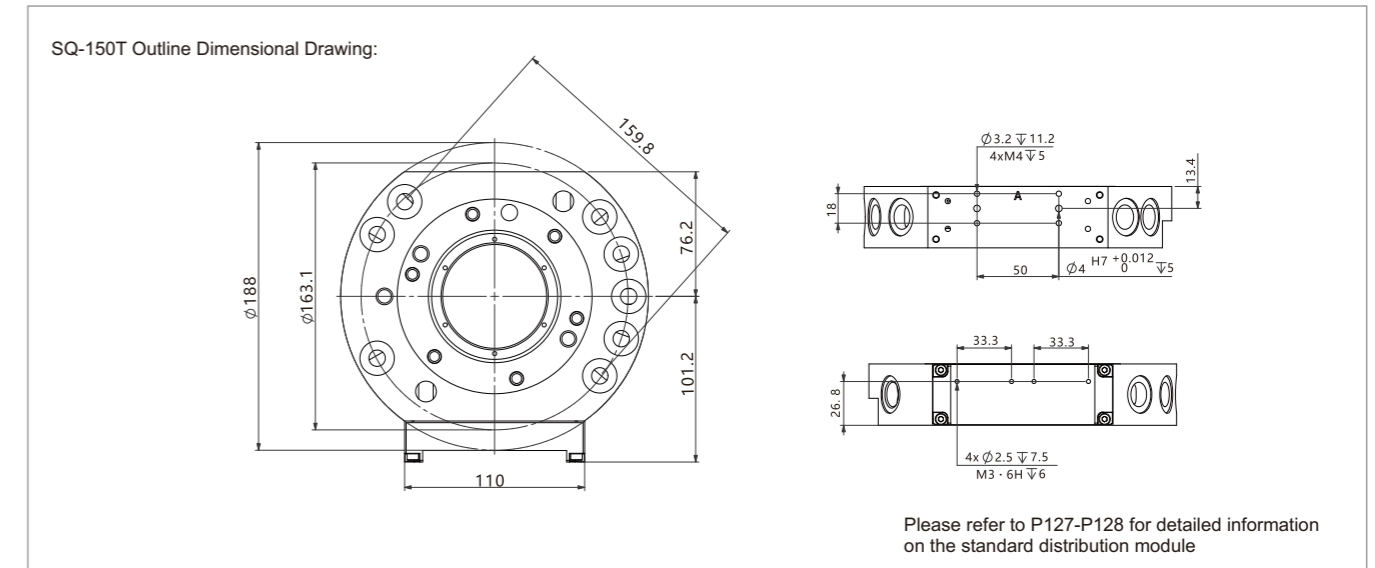
Model		HQ-150
Transportable weight	(kg)	150
Torque Mx (max)	(N·m)	2352
Torque My (max)	(N·m)	2352
Torque Mz (max)	(N·m)	2352
Locking force	(N)	12000
Repetitive positioning accuracy	(mm)	0.015
Weight	(kg)	4
Maximum distance when locked	(mm)	3
Air channel air interface thread		8xG3/8"
Maximum allowable XY axis offset	(mm)	± 2
Maximum allowable angular offset	(°)	± 1
Minimum ambient temperature	(°C)	5
Maximum ambient temperature	(°C)	60
Minimum work pressure	(bar)	4.5
Maximum work pressure	(bar)	7

Outline dimension diagram

※ Main clamp



※ Tool adapter



Note: For more models and sizes, please contact our sales personnel.

Mechanical arm quick change device



HQ-200

SQ-200T

Product features:

- Air pressure unlocking and clamping;
- Material: Hardened stainless steel;
- Repetitive positioning accuracy: within $\pm 0.02\text{mm}$;
- Various power, liquid, and gas modules can be optionally selected;
- Special insurance institutions prevent the risk of accidental gas outages;
- Standard configuration allows for quick connection to the gas source.

Applicable industry:

- Suitable for automated handling and assembly operations;
- Suitable for automated stamping, deburring and other processing operations,

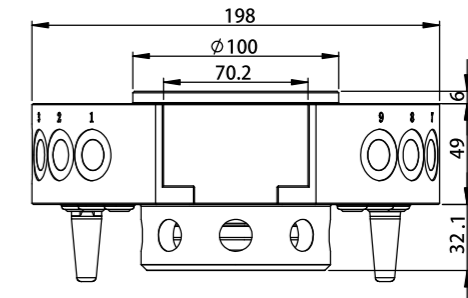
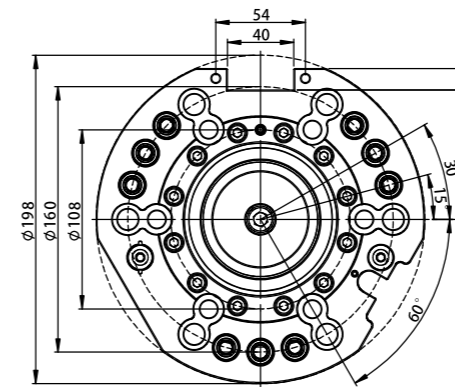
Main parameter table:

Model		HQ-200
Transportable weight	(kg)	200
Torque Mx (max)	(N•m)	3220
Torque My (max)	(N•m)	3220
Torque Mz (max)	(N•m)	2760
Locking force	(N)	34730
Repetitive positioning accuracy	(mm)	± 0.02
Weight	(kg)	5.1
Maximum distance when locked	(mm)	3
Air channel air interface thread		9*G3/8"
Maximum allowable XY axis offset	(mm)	± 2
Maximum allowable angular offset	(°)	± 1
Minimum ambient temperature	(°C)	5
Maximum ambient temperature	(°C)	60
Minimum work pressure	(bar)	4.5
Maximum work pressure	(bar)	7

Outline dimension diagram

※ Main clamp

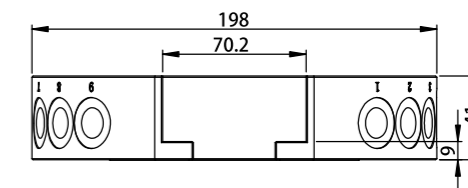
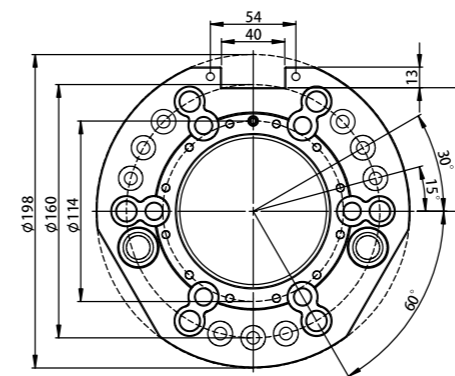
HQ-200 Outline Dimensional Drawing:



Please refer to P127-P128 for detailed information on the standard distribution module

※ Tool adapter

SQ-200T Outline Dimensional Drawing:



Please refer to P127-P128 for detailed information on the standard distribution module

Note: For more models and sizes, please contact our sales personnel.



Robot side



Tool side

Electrical module

Product features:

- Inserted signal pin;
- Low insertion and extraction force, low contact resistance, and better contact.

Applicable industry:

- Suitable for automated handling and assembly operations;
- Suitable for automated stamping, deburring and other processing operations.

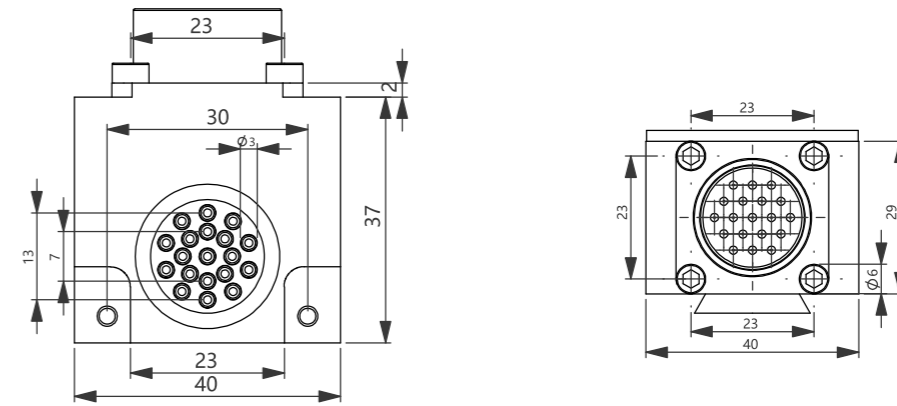
Main parameter table:

Product Code		Appearance	Specifications		Weight (kg)	Texture of material	Pin quantity (core)	Optional clamp model
Robot side	HT-K19		Joint type	3A 220V	0.1	aluminium alloy	19 needles	HQ-25 HQ-75 HQ-100 HQ-150
Tool side	HP-K19		Joint type	3A 220V	0.1	aluminium alloy	19 needles	SQ-25T SQ-75T SQ-100T SQ-150T

Outline dimension diagram

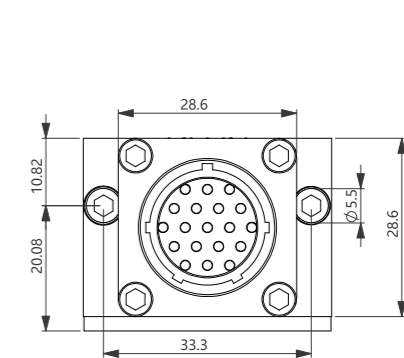
※ Main clamp

HT-K19 Outline Dimensional Drawing:



※ Tool adapter

HP-K19 Outline Dimensional Drawing:



Note: For more models and sizes, please contact our sales personnel.

Electrical module

Product features:

- Inserted signal pin;
- Low insertion and extraction force, low contact resistance, and better contact;
- The signal pin can be quickly replaced individually without the need to disassemble the entire module;
- Standard tool dip switch, capable of identifying tools.

Applicable industry:

- Suitable for automated handling and assembly operations;
- Suitable for automated stamping, deburring and other processing operations.



机器人侧

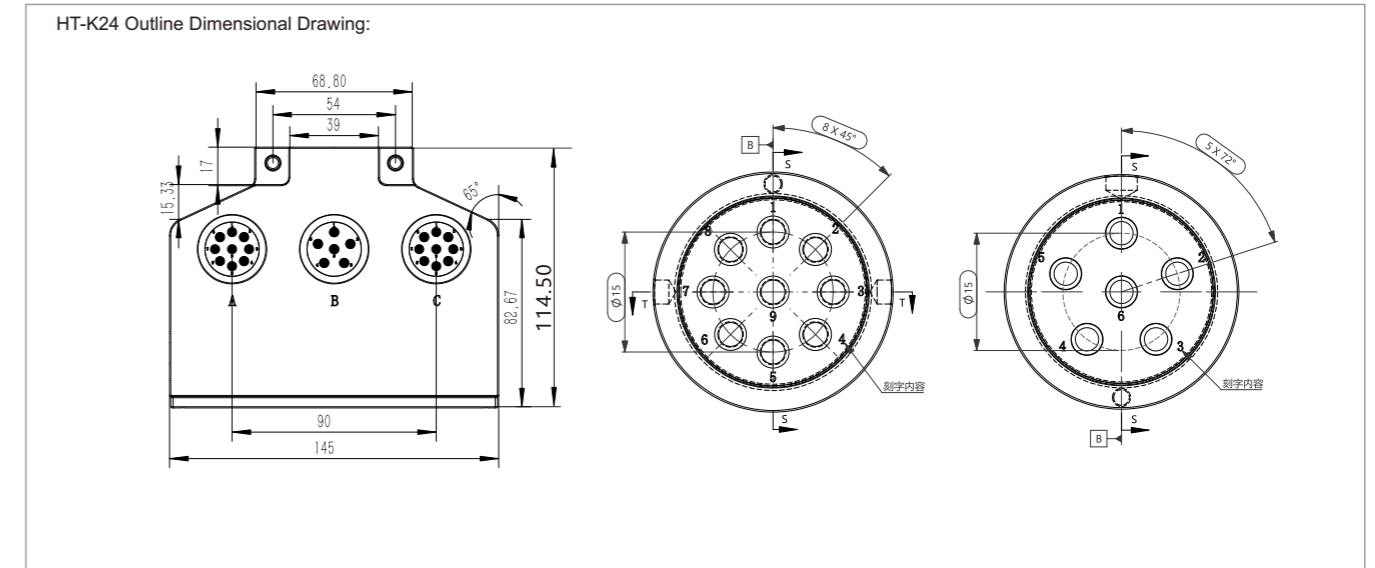
工具侧

主要参数表:

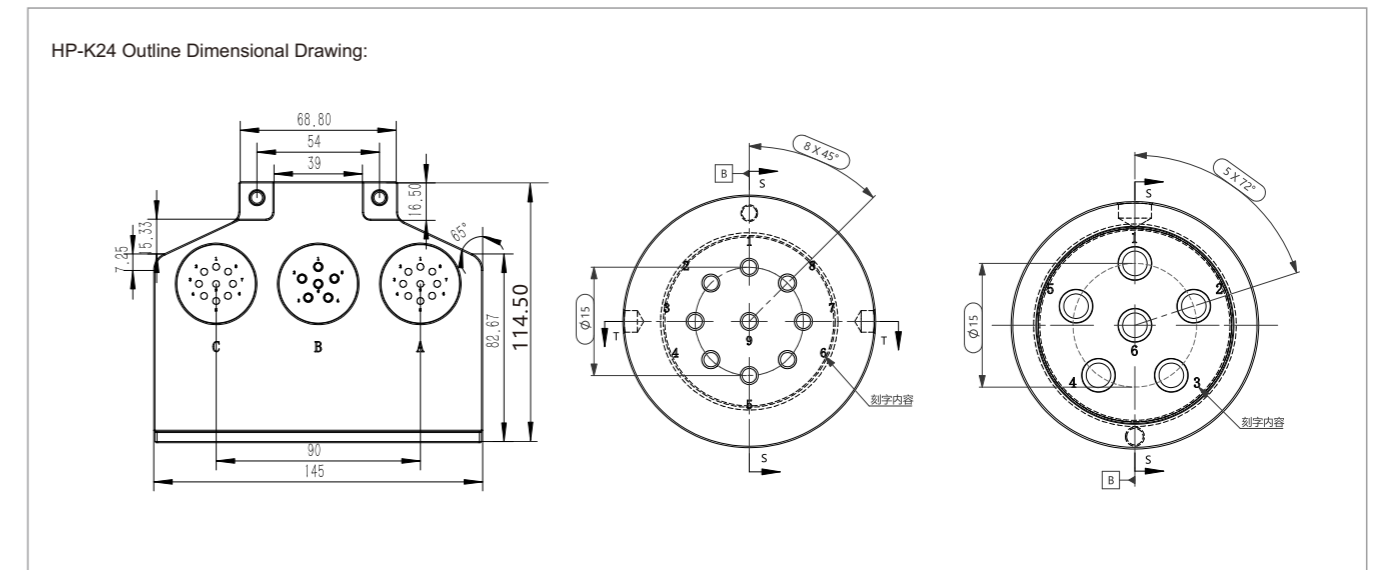
Product Code		Appearance	Specifications	Weight (kg)	Texture of material	Pin quantity (core)	Optional clamp model
Robot side	HT-K24		20A 380V 6针	1.2	aluminium alloy	24 needles	HQ-200
			3A 220V 18针				
Tool side	HP-K24		20A 380V 6针	1.2	aluminium alloy	24 needles	SQ-200T
			3A 220V 18针				

Outline dimension diagram

※ Main clamp



※ Tool adapter



Note: For more models and sizes, please contact our sales personnel.