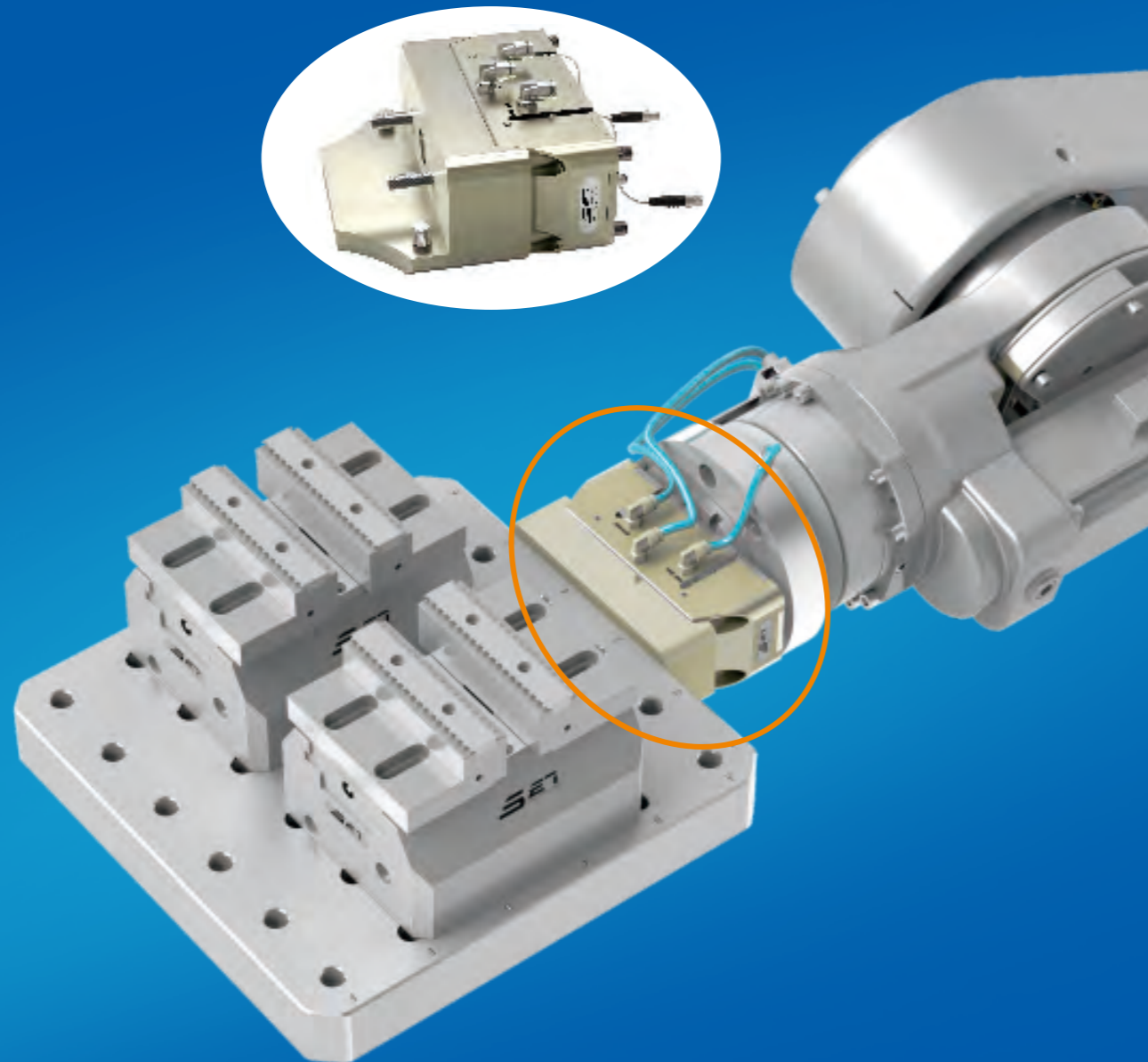


Tray quick change system

A perfect combination device for providing fast and precise loading and unloading work in the field of automation



Coupling

Product features:

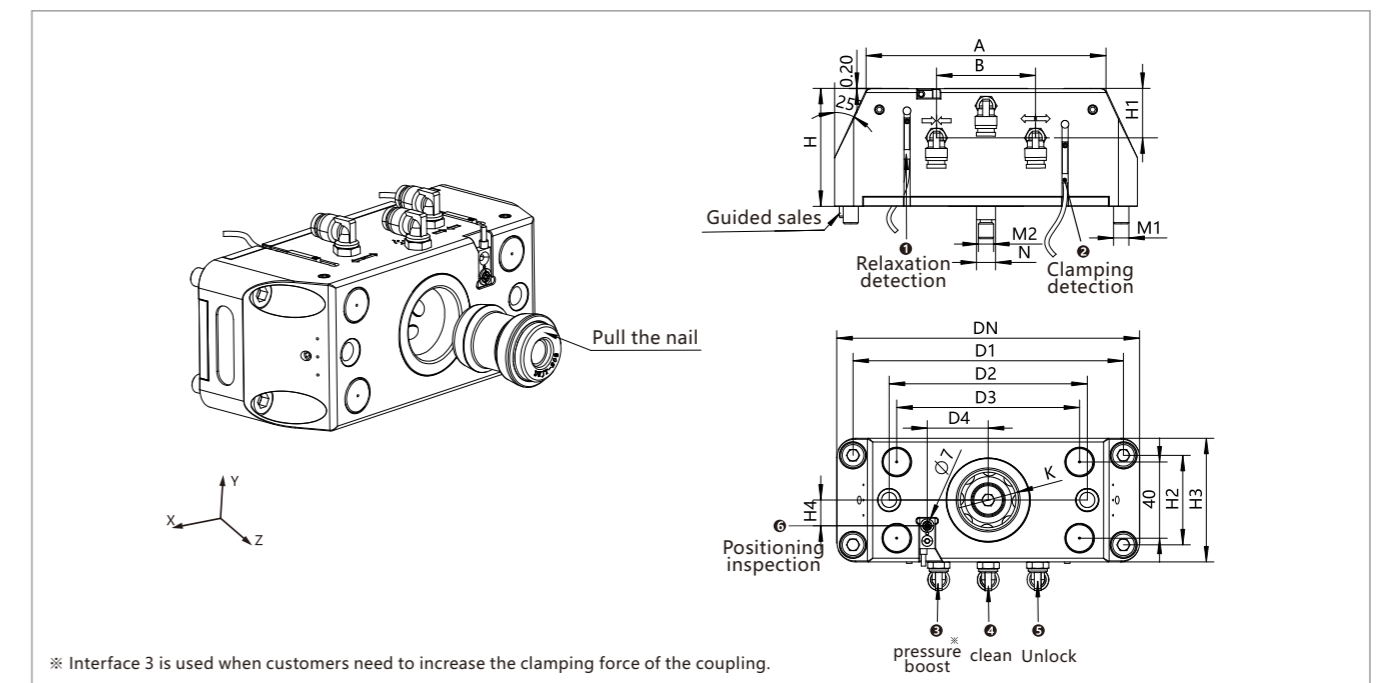
- Pneumatic unlocking, mechanical clamping, with self-locking function;
- Unlocking pressure: 0.6MPa;
- Material: Hardened stainless steel and alumina;
- Repetitive positioning accuracy<0.02mm;
- Has high clamping and locking force;
- Equipped with a release and clamping detection interface Tray adapter in place detection interface.

Applicable industry:

- Suitable for automated multi axis robot handling operations.



Outline dimensions:



Main parameter table:

Order number	Unlocking method	Clamping force (kN)	Maximum torque (N·m) _(x)	Maximum torque (N·m) _(z)	Weight (kg)
RME-20	gas pressure	4	600	1600	1.6

Order number	A	B	DN	D1	D2	D3	D4	H	H1	H2	H3	H4	K	M1	M2	N
RME-20	125	52	159	142	104	96	32	62	26	47	65	13.5	32	M8	M8	10

Tray adapter



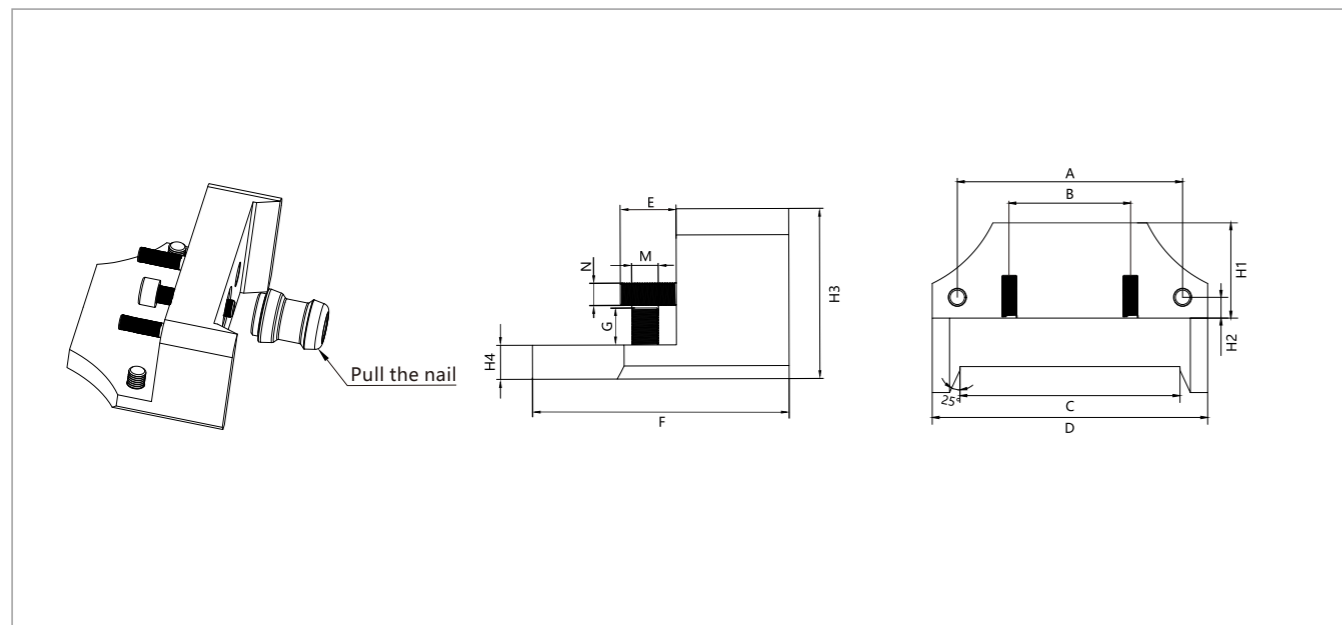
Product features:

- Material: Aluminum oxide;
- The usage process occupies less space, achieving maximum space utilization;
- Used in conjunction with a mechanical arm coupling.

Applicable industry:

- Suitable for automated multi axis robot handling operations.

Outline dimensions:

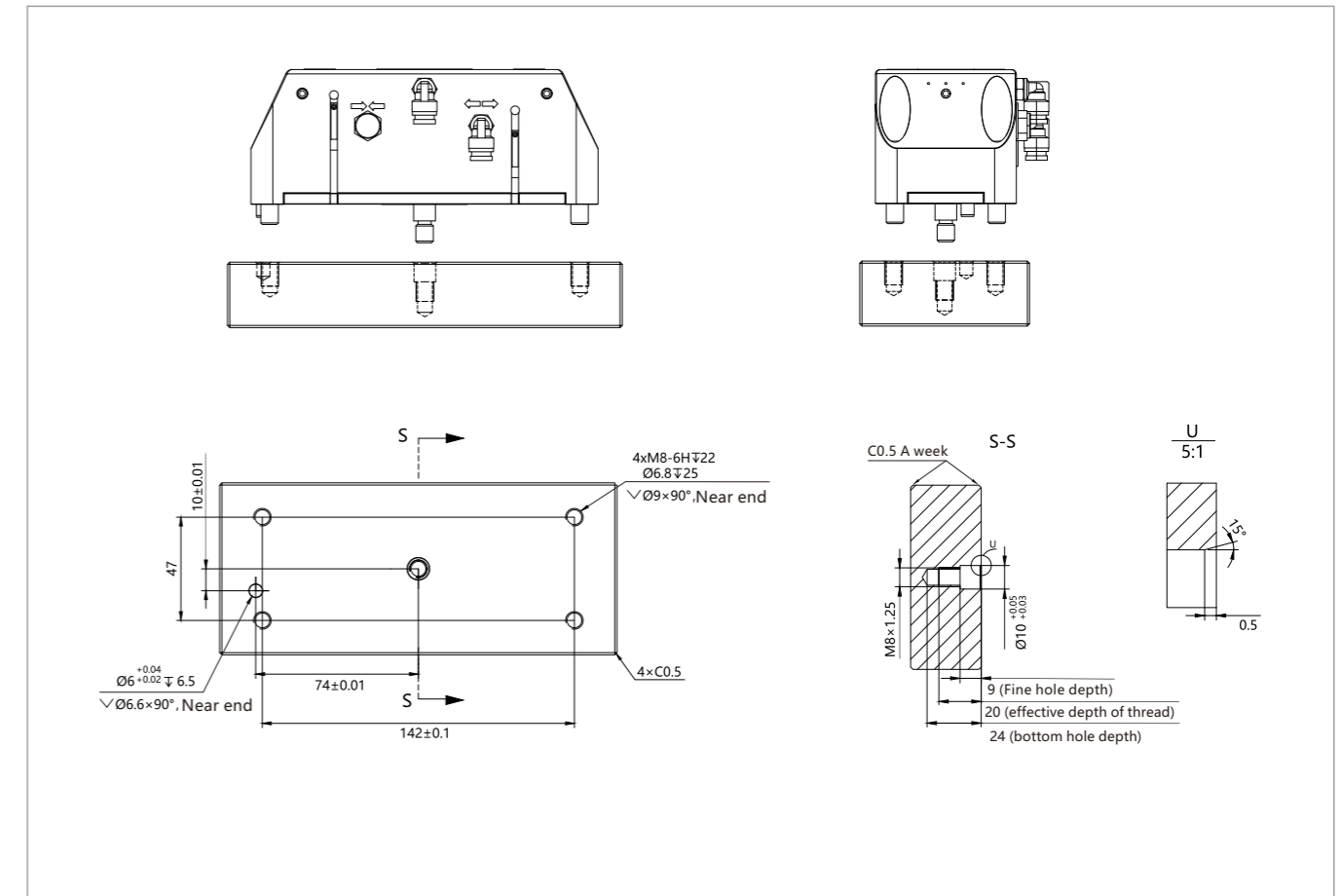


Main parameter table:

Order number	Material Science	Weight (kg)
CTY-20	Alumina	1.05

Order number	A	B	C	D	E	F	G	H1	H2	H3	H4	M	N
CTY-20	130	70	127	159	17	98	19	55	12	65	13	M10	M8

Coupling installation dimensions:



Installation size of tray adapter:

